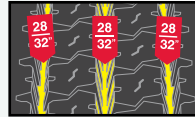


EXCEPTIONAL DRIVE PERFORMANCE.

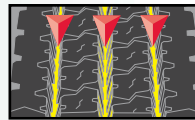
There's power in these drive axle tires—maximum power. The popular TY517™ drive tire delivers outstanding traction, long even wear and superior durability. Featuring our STEM-2 technology which enables this tough performer to stand up to your jobs' destructive forces, allowing for multiple retreads and lower maintenance costs.

LONGEVITY Specialized features for long treadlife

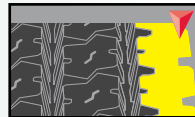
28/32" Original Tread Depth delivers long wear and road-grabbing power for the long haul without any compromises in traction.



Three Large Circumferential Grooves are extra wide, self-cleaning and V-shaped for improved water dispersion, lateral stability and long, even wear.

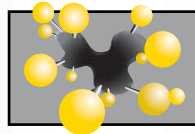


Strong, durable, **Solid Outer Shoulder** block contributes to flat, even wear on all types of 2- and 3-axle tractors and trucks.



EFFICIENCY Fuel-saving technology

Our **Advanced Rubber Compound** allows for more even carbon distribution, giving the TY517 lower rolling resistance.



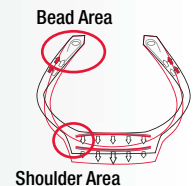
AVAILABILITY Industry-leading support

Yokohama Emergency Service (YES) provides fast, efficient service any time of day—24/7.



DEPENDABILITY Protection for multiple retreads

STEM-2 Technology (StrainEnergy Minimization) extends the life of the casing by redirecting normally destructive stress forces. This process greatly reduces strain on the critical bead and shoulder areas by minimizing flex in the casing.



This **Tapered Center Groove** promotes stone ejection and reduces tread-stone damage for enhanced casing life and retreadability.



Mud and snow rated for drive power in the toughest of conditions.

IT'S IN OUR DNA.

Our innovative business philosophy, **SmartSolution™**, is our commitment to meeting the most essential demands of today's fleets: Longevity, Efficiency, Availability and Dependability.



Our STEM-2 technology extends the life of the casing by redirecting normally destructive stress forces.



TY517™

Tire Size	Part No.	Ply Rating L.R.	Weight (LBS)	Rim Size		Inflated Dimensions		Tread Depth (1/32")	Loaded Dimensions		RPM	Maximum Load Capacity At Cold Inflation Pressure		Max Speed
				Measure	ALT	Overall Width (Inch)	Overall Diameter (Inch)		Section Width (Inch)	Static Radius (Inch)		Single LB/PSI	Dual LB/PSI	
295/75R22.5	51721	16H	118.2	9.00	8.25	11.4	40.7	28	12.4	19.1	512	6610@120	6005@120	75 MPH
11R22.5	51722	16H	124.8	8.25	7.50	11.1	42.0	28	12.0	19.6	497	6610@120	6005@120	75 MPH
11R24.5	51724	16H	133.4	8.25	7.50	11.1	44.0	28	12.2	20.6	474	7160@120	6610@105	75 MPH

Yokohama tires are subject to an ongoing development process. Yokohama Tire Corporation reserves the right to change product specifications at any time without notice or obligation. Not all models and sizes available in all locations.



Yokohama Corporate Headquarters 800.423.4544
 Commercial Customer Service 800.241.7051
yokohamatire.com

